

CONTACT ARRANGEMENT

code for x	function	toggle towards keyway	toggle opposite to keyway	actuation force typically
N	On-On	1-2, 4-5	2-3, 5-6	2N +/- 1N
R	Mom-On	1-2, 4-5	2-3, 5-6	2N +/- 1N

code for x	function	toggle towards keyway	toggle in center	toggle opposite to keyway	actuation force typically
P	On-Off-On	1-2, 4-5	open	2-3, 5-6	4N +/- 1N
S	Mom-Off-Mom				
T	Mom-Off-On				
PA	On-On-On	1-2, 4-5	1-2, 5-6	2-3, 5-6	4N +/- 1N
SA	Mom-On-Mom				
TA	Mom-On-On				

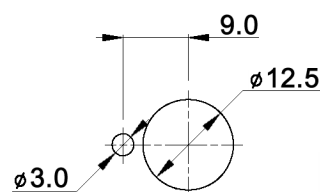
Specifications:

Contact rating: 3A, 250V AC / 6A, 125V AC
 4A, 30V DC / 5A, 12V DC
 6A, 6V DC
Contact resistance: 20mOhm max.
Insulation resistance: 1 000MOhm min. at 500V DC
Dielectric strength: 1 500V, 50Hz for the duration of 1 minute
Operating temperature: -45°C to +140°C
Mechanical life: min. 200 000 cycles (SA, TA: 100 000 cycles)
Soldering conditions: hand-soldering: max.: 420°C, 3sec., 60W
 auto-soldering: max.: 270°C, 5sec.
Mounting instruction: max. torque: 137Ncm
Material: Terminal / contact: brass, silver plated
 Case: DAP
 Housing: stainless steel, CNS9265
 Bushing: copper alloy, C3604BD nickel plated
 Actuator: copper alloy, C3604BD chrome plated

Included accessories: 2 pcs. nut 15/32-32, nickel plated, 14mm wrench size
 1 pc. tooth washer
 1 pc. locking washer

Compliance: RohS III (2015/863/EU)

PANEL MOUNTING



Tolerances: 0.00: ±0.25mm 0.0: ±0.40mm	Date 04/09	Name dr	<h1>MTG 206 x</h1>
Function table	10/19	dr	<h1>30 18 02</h1>
Contact arrangement	07/10	dr	
Modifications	Date	Name	Page 1/1